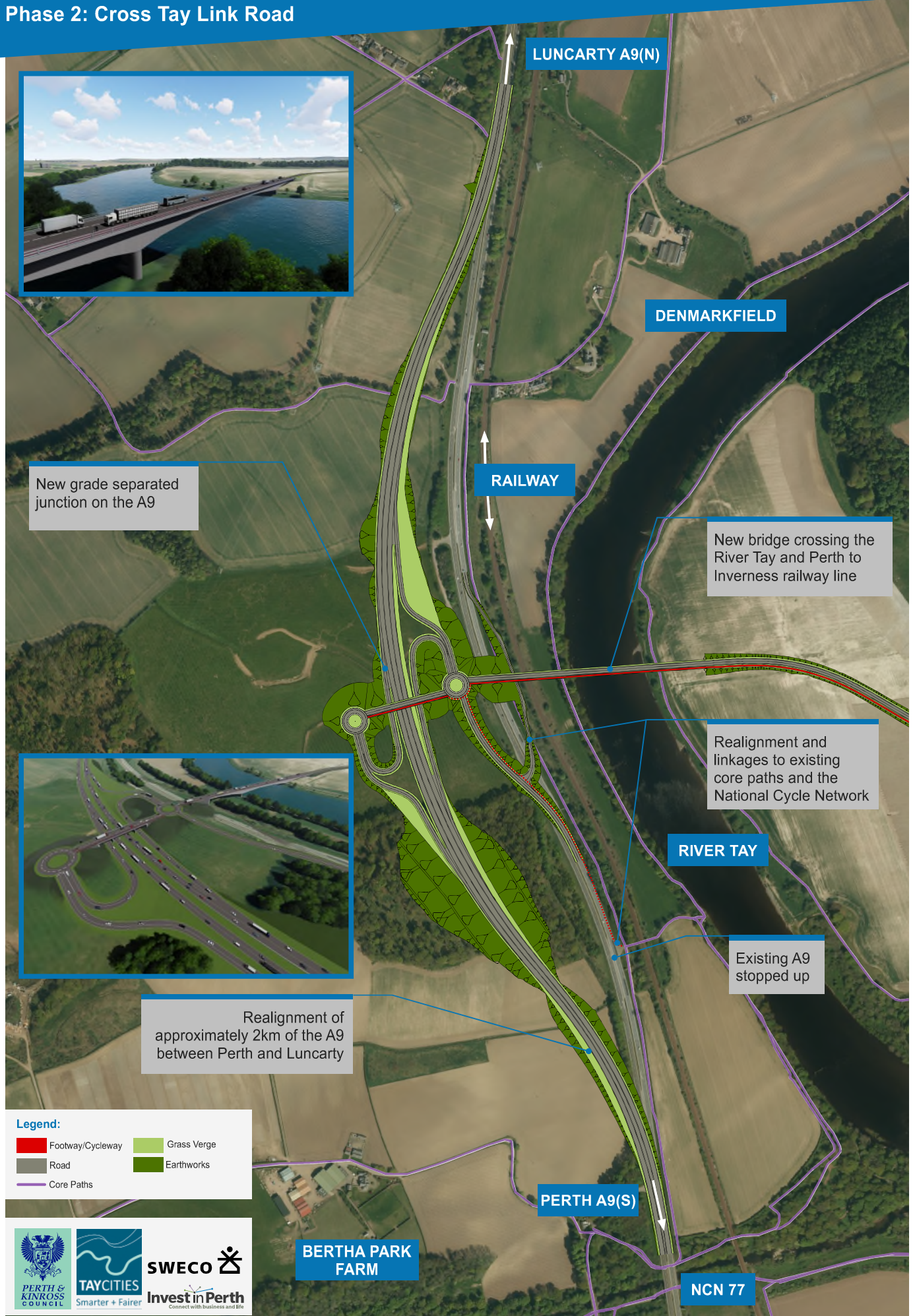


# Perth Transport Futures Project

## Phase 2: Cross Tay Link Road



LUNCARTY A9(N)

DENMARKFIELD

RAILWAY

New bridge crossing the River Tay and Perth to Inverness railway line

Realignment and linkages to existing core paths and the National Cycle Network

RIVER TAY

Existing A9 stopped up

Realignment of approximately 2km of the A9 between Perth and Luncarty

PERTH A9(S)

NCN 77

BERTHA PARK FARM



New grade separated junction on the A9



**Legend:**

- Footway/Cycleway
- Road
- Core Paths
- Grass Verge
- Earthworks

STAY INVOLVED!

For further information go to:  
Web: [www.perthtransportfutures.co.uk/cross-tay-link-road](http://www.perthtransportfutures.co.uk/cross-tay-link-road)  
Twitter: @PTFutures1 or contact us via email at: [roadsinfrastructure@pkc.gov.uk](mailto:roadsinfrastructure@pkc.gov.uk)